



2 Church Walk , Redruth, TR15 1DJ

FULLY BOOKED FOR VIEWINGS AT THIS TIME.

We are pleased to offer this well presented two double bedroom maisonette in this convenient location.

With one allocated parking space and small communal gardens.

Situated on the first and second floor of this small, purpose built development.

The first floor has a spacious hallway, open plan kitchen/lounge/diner, one double bedroom and a bathroom. The top floor has a cloakroom with a WC and basin. There is a second large double bedroom with a shower and storage.

Kitchen has integrated electric oven, gas hob and extractor, integrated fridge and freezer. Washing machine.

OFCOM states: Broadband speeds - up to 1800MBPS. Mobile coverage: Vodafone and Three - good outdoor, variable in home. O2 and EE - good outdoor.

EPC rating C75. Council Tax Band A. Deposit £1035.00. Available now.

Mains Gas, water, electricity and sewerage. Gas Central Heating.

£900 PCM

2 Church Walk

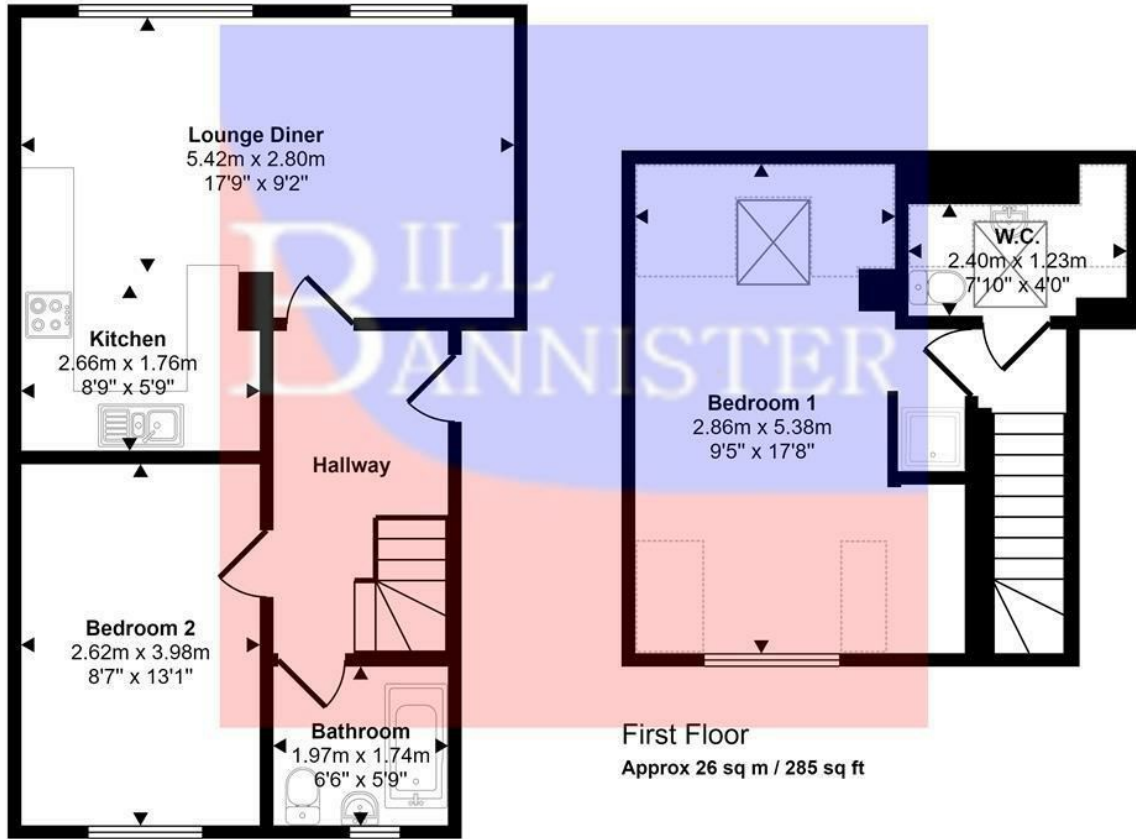
, Redruth, TR15 1DJ



[Directions](#)



Approx Gross Internal Area
71 sq m / 761 sq ft



Ground Floor
Approx 44 sq m / 476 sq ft

Denotes head height below 1.5m

This floorplan is only for illustrative purposes and is not to scale. Measurements of rooms, doors, windows, and any items are approximate and no responsibility is taken for any error, omission or mis-statement. Icons of items such as bathroom suites are representations only and may not look like the real items. Made with Made Snappy 360.

These particulars, whilst believed to be accurate are set out as a general outline only for guidance and do not constitute any part of an offer or contract. Intending purchasers should not rely on them as statements of representation of fact, but must satisfy themselves by inspection or otherwise as to their accuracy. No person in this firm's employment has the authority to make or give any representation or warranty in respect of the property.

